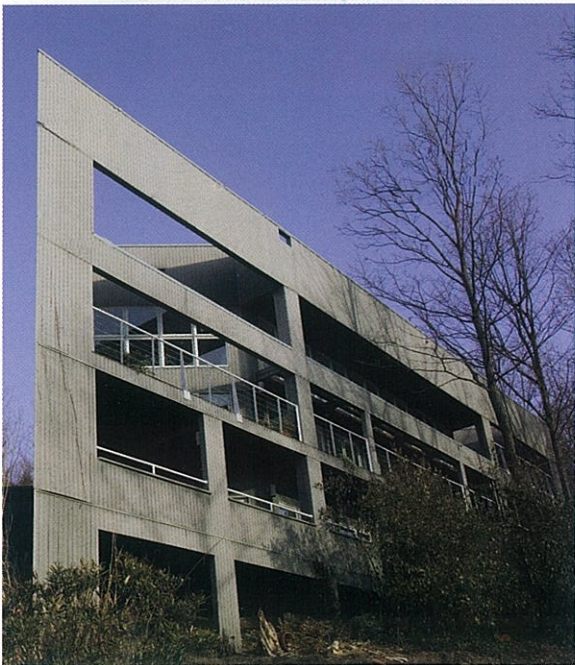
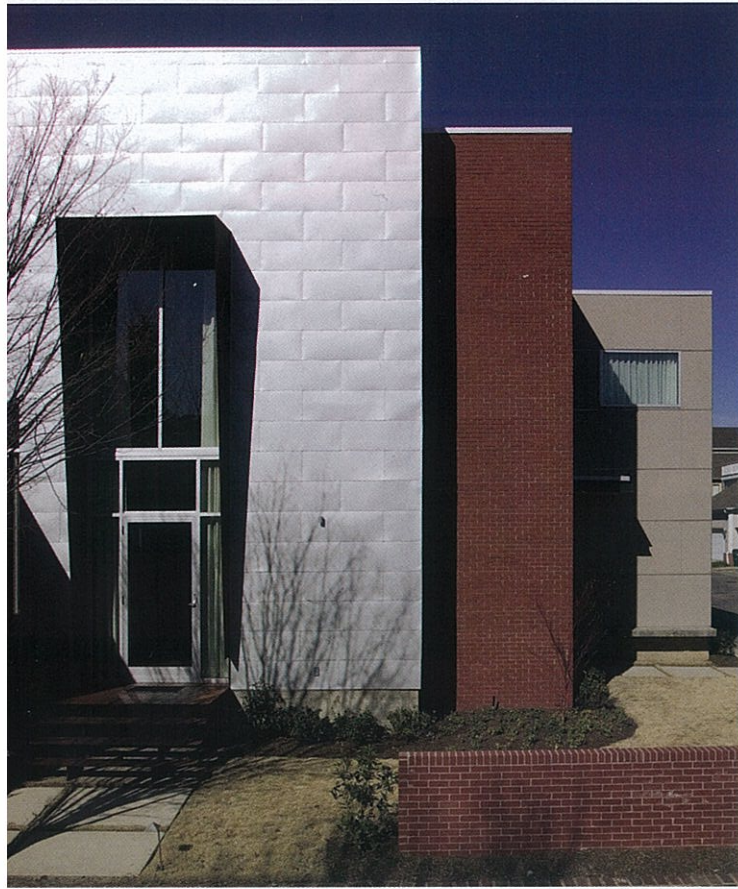


# Modern and



# Contemporary



## Modern and Contemporary

In the latter half of the twentieth century, architects broke free of the stylistic conventions binding them to previous centuries and created entirely new forms, some more practical than others. Internationalists (types of Modernists) favored boxy minimalism and abundant glass, shown in the Francis-Mah-designed home of Jim Lutz and Kaywin Feldman in Memphis (above). The emphasis is on pure function, bringing building materials to the forefront and elevating raw, unrefined steel, stone and glass to the level of art. Some contemporary architects are influenced by postmodern theories of art and design like deconstruction, where elements are freely combined and exaggerated in unusual and striking ways, as in South Bluff homes designed by the Memphis firm Archimania (above left and facing page right). Located on Chattanooga's Signal Mountain, the contemporary home of architect David Barlew (facing page, top) is visible from most of the city. Nashville's Woodmont Park neighborhood is the location of architect Price Harrison's modern home (left). ■

SEE SOURCES FOR DETAILS.

